

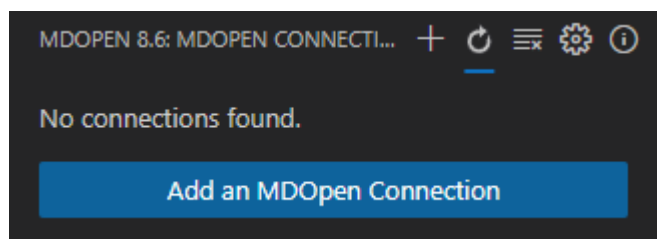
# Manage MDOpen Connections in VS Code

When the MDOpen extension for VS Code is initially displayed after startup, or when an MDOpen connection isn't established, the MDOpen connections can be managed from the MDOPEN CONNECTIONS panel.

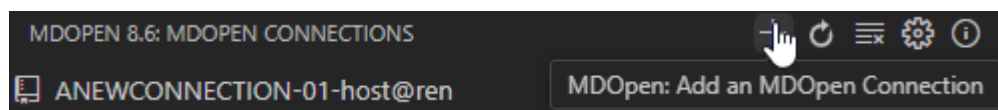
## Icons at top of Connections Panel



If no connection exists yet it shows a button to add a connection:



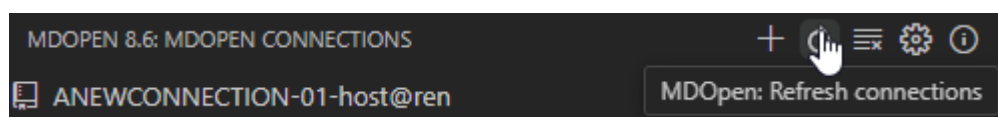
## Add a New Connection



Click this icon to add a new connection. This will open the connection creation editor. Also when there is no connection yet and by clicking the Add an MDOpen connection button will open the connection creation editor.

[Instructions for the Connection Properties](#)

## Refresh the List of Connections



Clicking the refresh icon refreshes the connections view entries.

## Reset the Connections View



This action can be useful in case you click on any connection to connect and nothing happens or it seems frozen. After clicking the reset icon, try again. If still frozen, then the IDE will need to be restarted.

## Open the MDOpen settings



This action opens the MDOpen settings panel where you can adjust preferences and logging for the MDOpen extension.

[MDOpen Settings Instructions](#)

## Connections View Help



Clicking the icon opens this page in your default browser.

## Icons for MDOpen Connection Entries

Hover the cursor over a disconnected Connection Entry to view the following icons:



## Connect to this Connection Entry



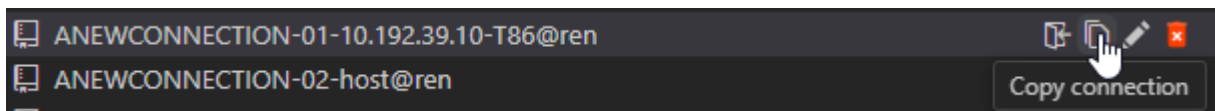
Clicking on the icon will start to connect to this connection. Alternatively, you can also just click on the connection name itself.

Only one MDOpen connection can be active per VS Code window. However, there is no limit to the number of windows. To open an additional window, click on File in the menu bar and then select New Window.

### [Instructions for an Active Connection](#)

---

## Copy a Connection Entry

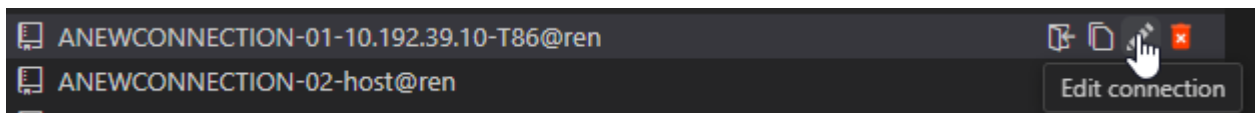


Click on the copy icon to add a new connection entry with the parameters pre-populated with the values of the existing entry.

### [Instructions for the Connection Properties](#)

---

## Edit a Connection Entry

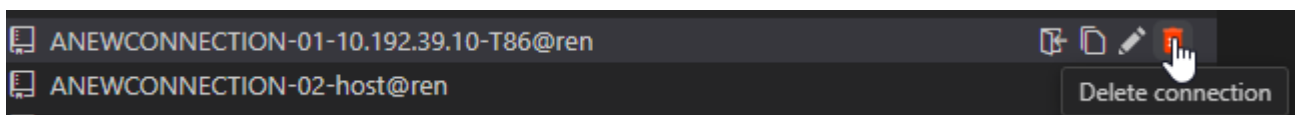


Click on the edit icon to edit the connection entry parameters.

### [Instructions for the Connection Properties](#)

---

## Delete a Connection Entry



Click on the delete icon to delete the connection entry. A notification dialog will open and ask you if you really want to delete the connection. If you click on Yes, the connection will be deleted and removed from the connections view.

